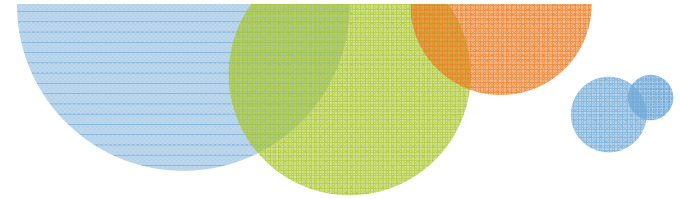




Guidelines for the Development of Regional CIP-R Programmes

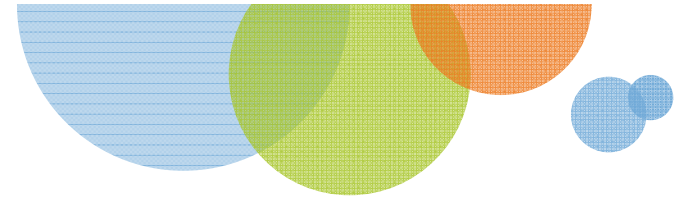
Prof. Paolo Trucco, PhD
FONDAZIONE POLITECNICO DI MILANO
paolo.trucco@polimi.it

Milan – June 22-23, 2015



Agenda

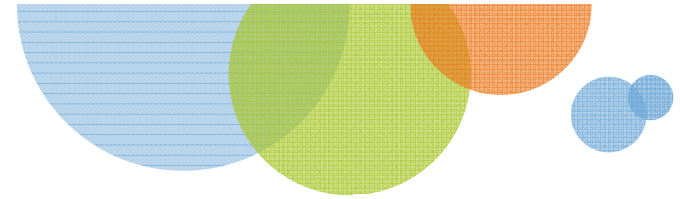
- Aim and scope of the guidelines
- Existing Guidelines for CIP-R Programmes
- A Framework for the development of Regional CIP-R Programmes
 - Principles
 - Development strategies
 - Design & Implementation cycle



Aim and Scope of Guidelines

- To provide a rationale for the role and relevance of the key success factors for developing Regional CIP-R Programmes
- To suggest coherent management strategies and solutions for the start-up and long-term development of the programme

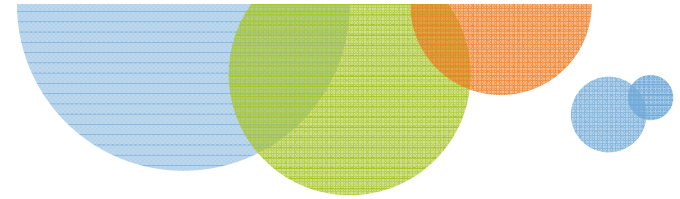




Existing Guidelines

- US Federal Emergency Management Agency (**FEMA**)
 - Attributes that define a successful partnership - PADRES model (**P**ublicly **A**ccessible, **D**edicated, **R**esourced, **E**ngaged, **S**ustainable)
- The Infrastructure Security Partnership (**TISP**)
 - Regional Disaster Resilience Guide and Action Plan (or RDR Guide)
 - a **step-by-step process** to develop a cross-sector, multi-jurisdiction strategy to improve resilience capabilities
- The Euro Network and Information Security Agency (**ENISA**)
 - *Good Practice Guide on Cooperative Models for Effective Public Private Partnership* (2011) - aspects that add value when setting up and running PPPs
- Recommended Elements of Critical Infrastructure Protection for Policy Makers in Europe (**RECIPE**) Project
 - High level principles and policy options

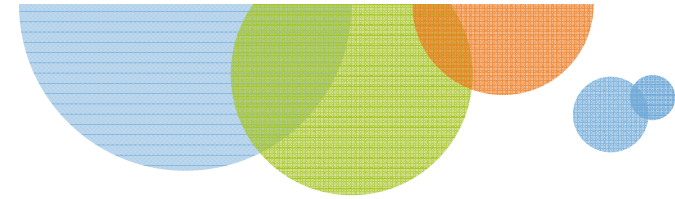




Our Approach

- The emerging phenomenon of Regional CIP-R Programmes and related PPC is not homogeneous
- A more contingency-driven approach to Regional CIP-R Programme development is needed
- Legislation, PPC size and governance model, as well as CIP-R programme goal and objectives are considered as given context factors

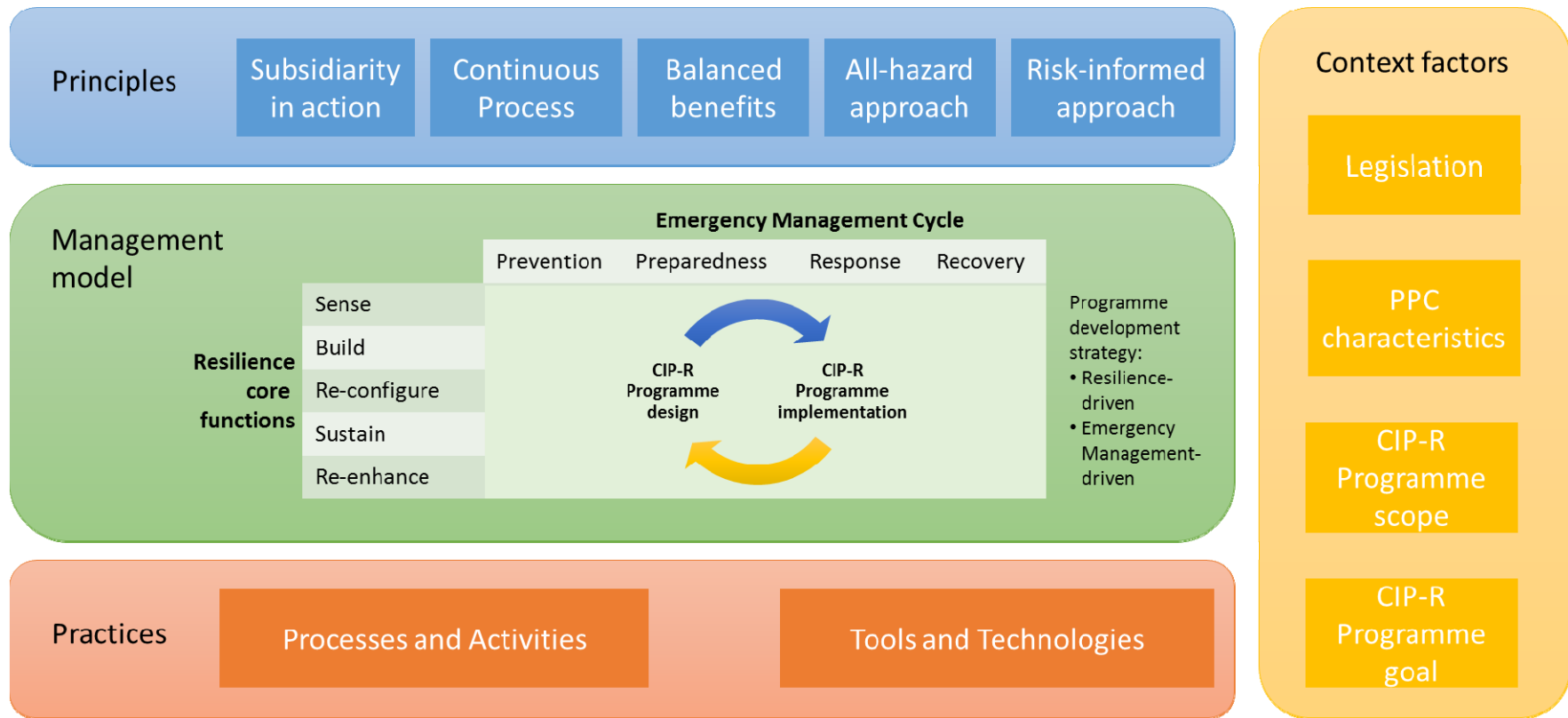
The ambition is to provide CIP-R stakeholders with a framework to design and develop the best Programme for their region by leveraging on local available resources and capacities

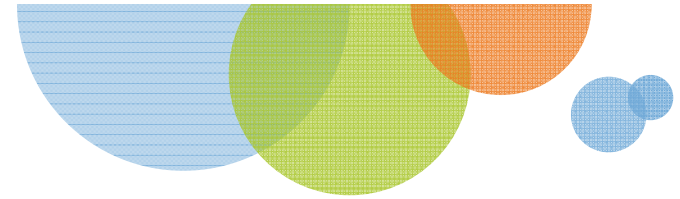


CIP-R Programme Scope and Goal

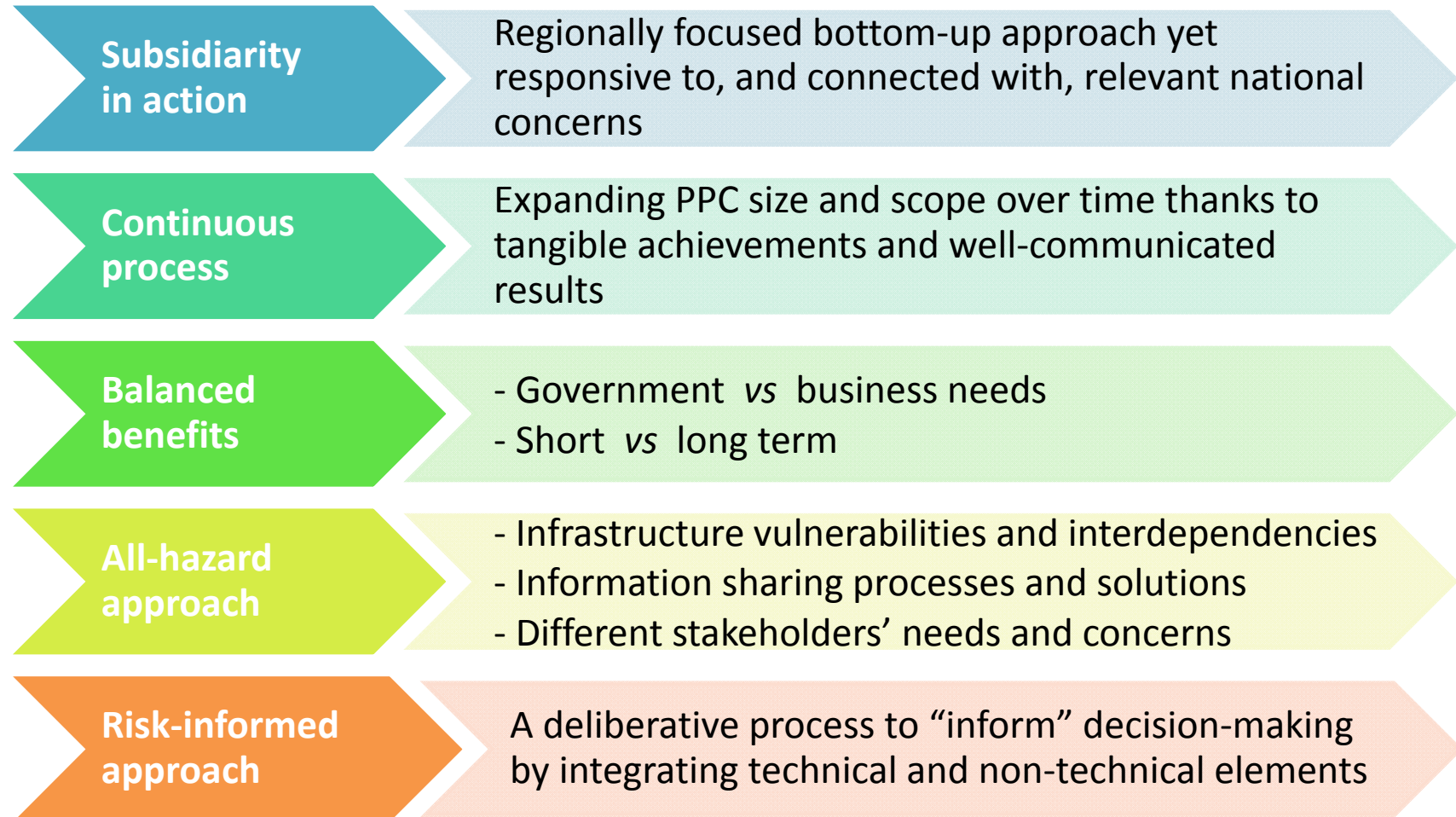
Characteristics of a Regional CIP-R programme	Prevailing perspective	
	Protection	Resilience
Subject focus	Asset-driven	Services-driven
System coupling	Loose	Tight
Type of disturbance	Destruction	Destruction / Disruption / Degradation
Priority	Terrorist and natural threats prioritised	'All-hazards'
Value proposition	Cost-centred	Benefit-centred
Activities directed to	Hardening Structures	Redesigning processes
Mitigation	Reactive approach	Proactive approach
Risk Concept	Concept of 'risk' rooted in engineering	Concept of 'risk' embracing social perceptions and public choice
Control mechanism	'Command and control'	Shared responsibility
Technology	Search for technical fixes	Socio-technical innovation
Strategy	Aligned toward 'criticalness'	Aligned toward 'brittleness'

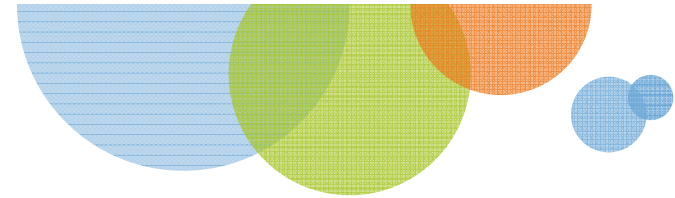
Framework for Regional CIP-R Programmes



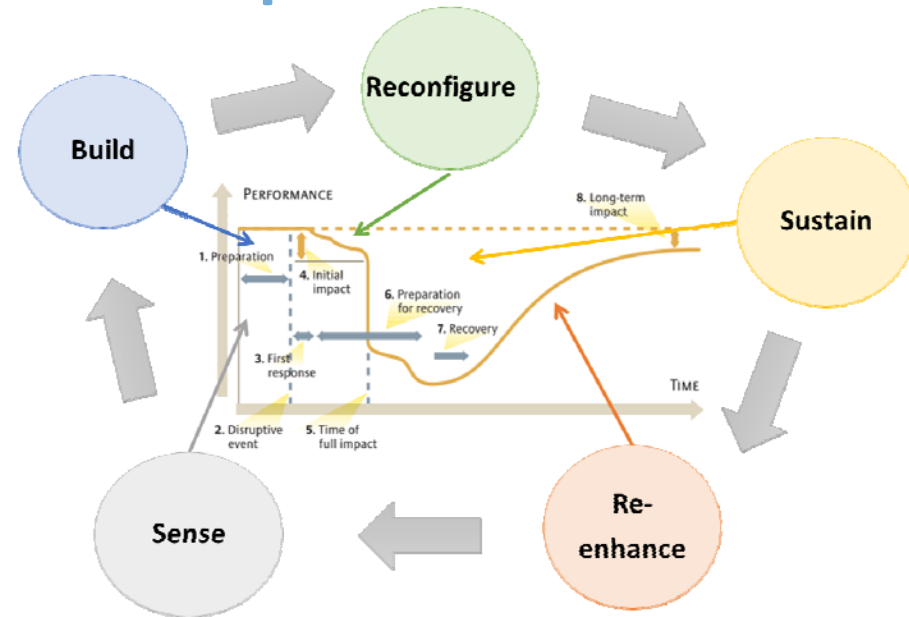
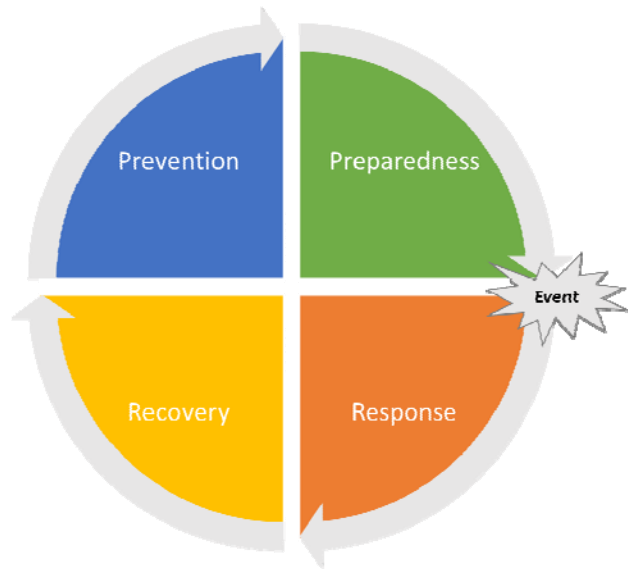


Principles





CIP-R contents development

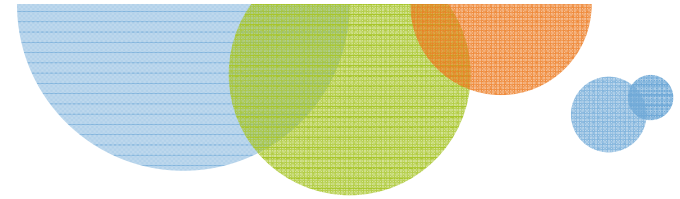


Regional plan for natural disasters

- *Prevention / Preparedness*
- *Response*

- *Robustness vs adaptability*
- *Responsiveness vs recovery*

Sustain transport services during severe weather events



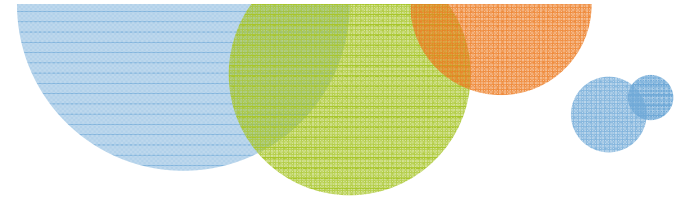
Programme development strategy

- **Emergency Management-driven development strategy**
 - Preferable when the PPC is led by public authorities with security roles or by responders
 - The action plan is generally more focused on EM system (e.g. Kennemerland Safety Region, PNWER, Copenhagen).



- **Resilience-driven development strategy**
 - Building capacities into the regional system that are exploited by different agencies (e.g. Civil Protection or Police forces)
 - EM decision making and operational processes are largely out of the scope of the programme (e.g. Lombardy Region, Scotland, LABEOC)
 - Typical when the PPC is led by private stakeholders (e.g. Montreal)





Design & Implementation

▪ **System analysis**

Identification of resilience challenges and prioritisation of intervention

▪ **Organisational set-up**

To support the implementation of the programme (roles, info sharing rules ...)

▪ **Programme Outreach**

Connecting with the society:

- engage the community and the education system
- Public Information/Risk Comm

▪ **Programme Financing**

Financial resources required to sustain the programme, its activities and action plan

▪ **Action Plan**

Feasible and endorsed by all the stakeholders involved in the PPPs

▪ **Sector-specific needs and actions**

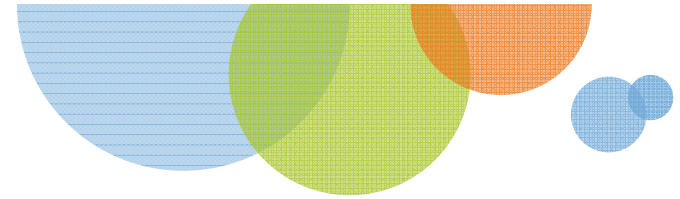
Included in the programme and tracked by the action plan

▪ **Exercises and Training**

Involve CI operators in Civil Protection exercises; plan periodical exercises focused on CI disruptions and dependencies.

▪ **Measure and communicate results**

To promote the programme, justify resources, sustain awareness and consensus form the community



Thanks!

www.miracle-project.eu

Prof. Paolo Trucco (paolo.trucco@polimi.it)

Fondazione Politecnico di Milano

Scientific Coordinator